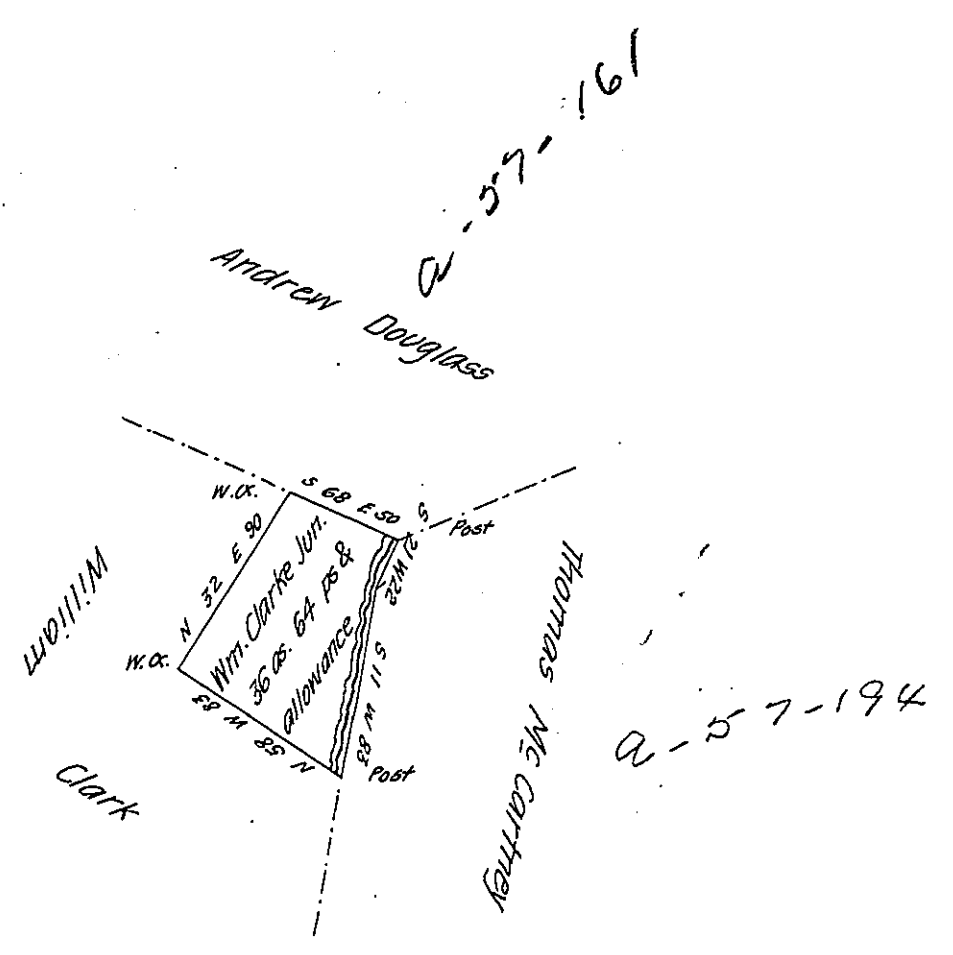


FORM NO 1.



Surveyed to William Clarke Jun^r on the 14th day of August A.D. 1816
 the above described tract of thirty six acres and sixty four perches and allowance of
 Six per Cent &c including an improvement adjoining lands of William Clarke
 Thomas Mc Cartney and Andrew Douglass Situate on Blacklick Creek in Wheatfield
 Township in the County of Indiana By Warrant of the 23rd November 1814 as appears
 from papers remaining in my Office.

Alexander Taylor D.S.

To Jacob Spangler Esquire
 Surveyor General.

IN TESTIMONY that the above is a copy of the original remaining on file in
 the Department of Internal Affairs of Pennsylvania, made
 conformably to an Act of Assembly approved the 16th day of
 February, 1833, I have hereunto set my Hand and caused
 the Seal of said Department to be affixed at Harrisburg,
 this twenty sixth day of January 1908

Henry Horck
 Secretary of Internal Affairs.